



jordan fishwick

16 Woodville Avenue Mossways Park, SK9
Guide Price £209,950



Mossways Park Wilmslow SK9 5PA

Guide Price £209,950

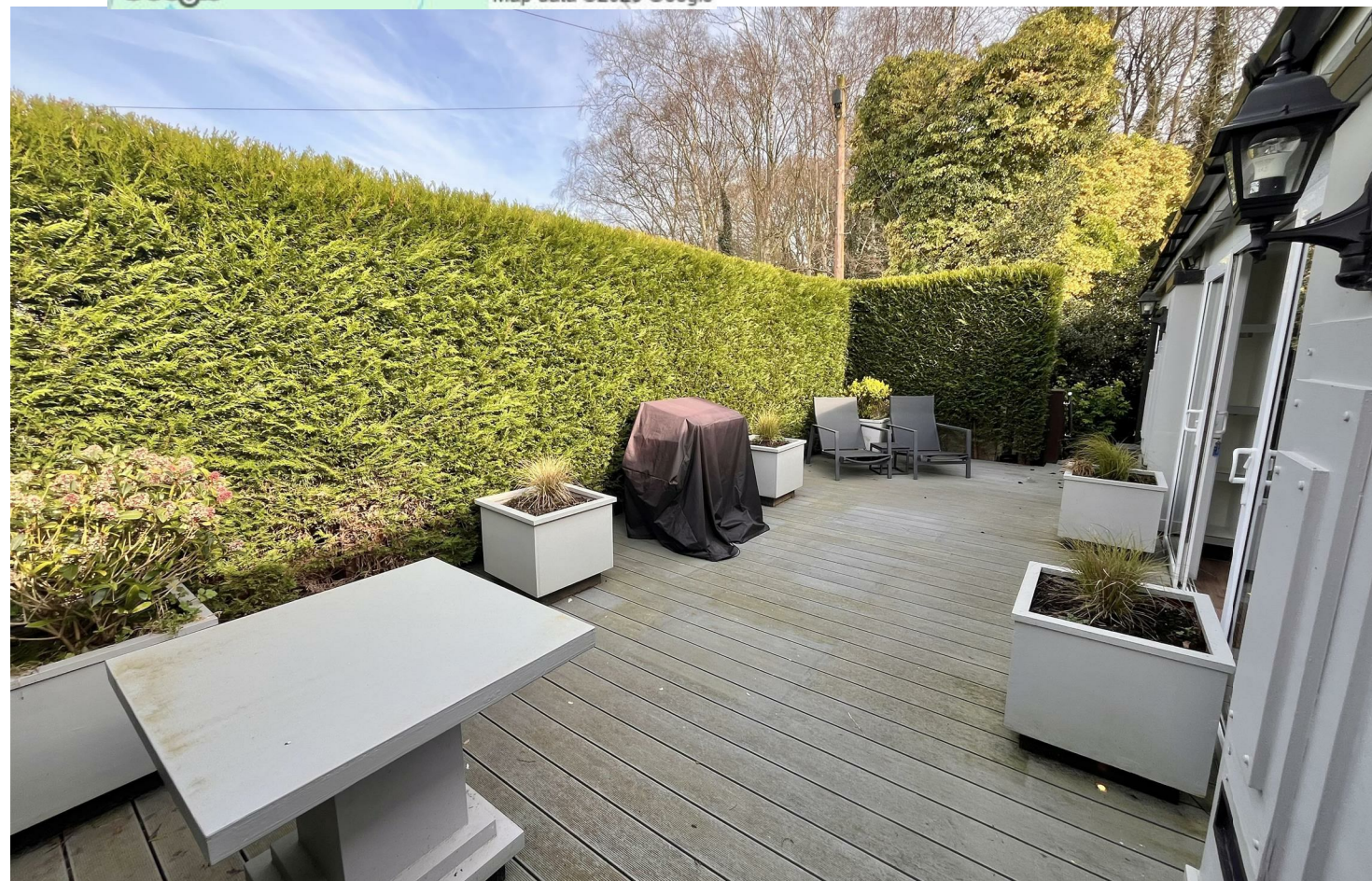
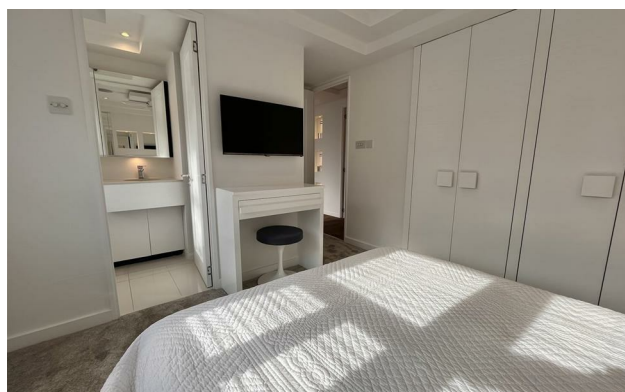


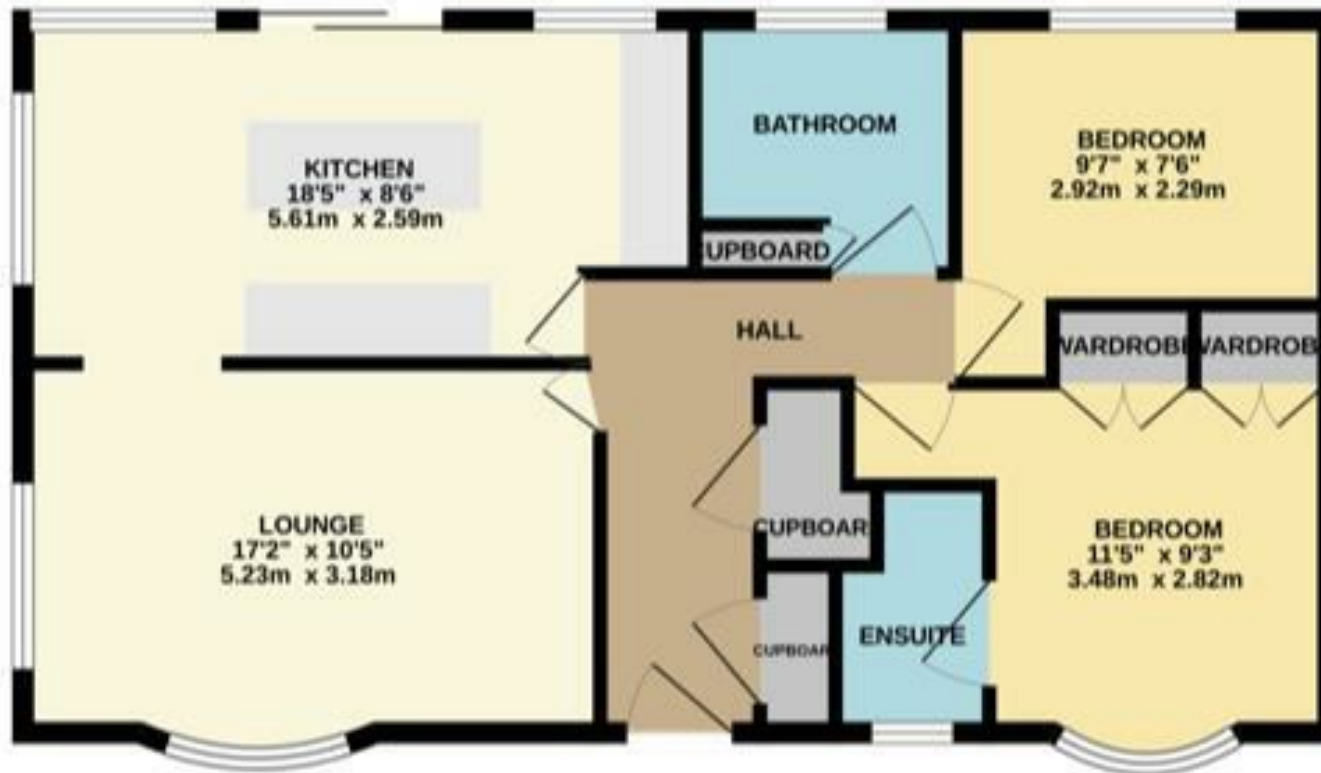
NO CHAIN. (Occupier's over 50's) Take a look at this two bedroom detached park home that offers stylish and modernised accommodation, set within a beautiful rural setting whilst being in close proximity to Wilmslow. Set in a quiet location on the popular Mossways Park there are a number of popular towns in the surrounding areas, these include Knutsford, Wilmslow and Alderley Edge offering great local amenities and attractions.

The well presented park home comprises in brief: an excellent sized living area with feature electric fire, media wall with shelving and display lighting. The open plan kitchen diner has been upgraded with a central island and modern fitted kitchen with UPVC sliding patio doors to the rear low maintenance decked terrace. The kitchen is light and airy due to the number of windows which encourage natural light. The kitchen area is stylish with matching wall and base units, complementary worktop surfaces and has integrated appliances. Additionally the home offers two bedrooms, both with fitted wardrobe facilities and the principle bedroom has a contemporary ensuite shower room. The main family bathroom consists of a three piece modern white bathroom suite. Externally, the property offers a low maintenance and sociable garden space which is laid with decking, has a mature hedgerow for added privacy and external lighting. A garden shed offers extra storage. Two off-road parking spaces can be found to the left hand aspect. Viewings essential.



- Over 50's Development
- Stunning Interior
- Two Bedrooms
- Modern Bathroom
- Ensuite
- Decked low Maintenance Garden
- Parking





Measurements are approximate. Not to scale. Illustrative purposes only.
 Made with Metropack 02/2019



These particulars are believed to be accurate but they are not guaranteed and do not form a contract. Neither Jordan Fishwick nor the vendor or lessor accept any responsibility in respect of these particulars, which are not intended to be statements or representations of fact and any intending purchaser or lessee must satisfy himself by inspection or otherwise as to the correctness of each of the statements contained in these particulars. Any floorplans on this brochure are for illustrative purposes only and are not necessarily to scale.

Offices at: Chorlton, Didsbury, Disley, Hale, Glossop, Macclesfield, Manchester Deansgate, Manchester Whitworth Street, New Mills, Sale, Wilmslow and Withington

36-38 Alderley Road, Wilmslow SK91JX
01625 532000

wilmslow@jordanfishwick.co.uk
 www.jordanfishwick.co.uk